



HAYSTACK GLEN

Estates

Table of contents:

The Samuel

3,854 Sqft **5 bed | 3.5 bath | 2 car garage**
Expandable to 4,000 Sqft | 6 bed | 4.5 bath | 3 Car Garage

The Avalon

4,188 Sqft **5 bed | 4.5 bath | 2 car garage**
Expandable to 4,673 Sqft | 6 bed | 5.5 bath

The Aspen

4,650 Sqft **5 bed | 4.5 bath | 1 car garage**
Expandable to 6 bed or 2 Car Garage | 5.5 Baths

The Henry

5,000 Sqft **6 bed | 6.5 bath | 3 car garage**

Luxury Features

Location



The Perfect Place To Relax & Unwind

*Home is the centerpiece to how you live your life
& spend your time.*

Those who choose to settle at Haystack Estates do so because of the scenic area, world-class shopping locations, and proximity to the beautiful Jersey Shore.

Each home site at Haystack Glen includes outstanding features you'd expect in today's finest luxury homes. Exceptional living starts with fabulous design: all homes are complimented with 4 – 6 bedrooms and 2 ½ – 6 baths, and square footage ranges from 3,650 sq. ft. – 6,000+ sq. ft. and beyond. Over 50 acres of natural buffer will remain untouched and preserved, which adds privacy to each unique home site.

MAXIM SOUTHARD ROAD

21.10
2 Haystack Court
1.2502 Acres
HENRY MODEL BUILDABLE

21.02
1 Haystack Court
1.2502 Acres
HENRY MODEL BUILT

21.09
4 Haystack Court
1.2501 Acres
HENRY, ASPEN, AVALON
& MODELS BUILDABLE

21.03
3 Haystack Court
1.2502 Acres
SAMUEL MODEL BUILT

21.08
6 Haystack Court
1.2518 Acres
AVALON MODEL BUILDABLE

21.07
8 Haystack Court
1.2695 Acres
ASPEN & AVALON
MODELS BUILDABLE

21.06
10 Haystack Court
1.2531 Acres
ASPEN & AVALON
MODELS BUILDABLE

21.05
12 Haystack Court
6.8200 Acres
HENRY MODEL OR CUSTOM
HOME UP TO 11,000 SQ FT BUILDABLE

HAYSTACK COURT

HAYSTACK GLEN

Estates

12 Haystack Court

Lot 21.05

6.82 Acres

10 Haystack Court

Lot 21.06

1.2531 Acres

8 Haystack Court

Lot 21.07

1.2695 Acres

6 Haystack Court

Lot 21.08

1.2518 Acres

4 Haystack Court

Lot 21.09

1.2501 Acres

2 Haystack Court

Lot 21.10

1.2502 Acres

THE SAMUEL

5 bedroom | 3.5 bathroom | 3,854 sqft | 2 car garage

EXPANDABLE TO 4,000 SQFT | 6 BED | 4.5 BATH





ELEVATION
MODERN



ELEVATION
A



ELEVATION
B

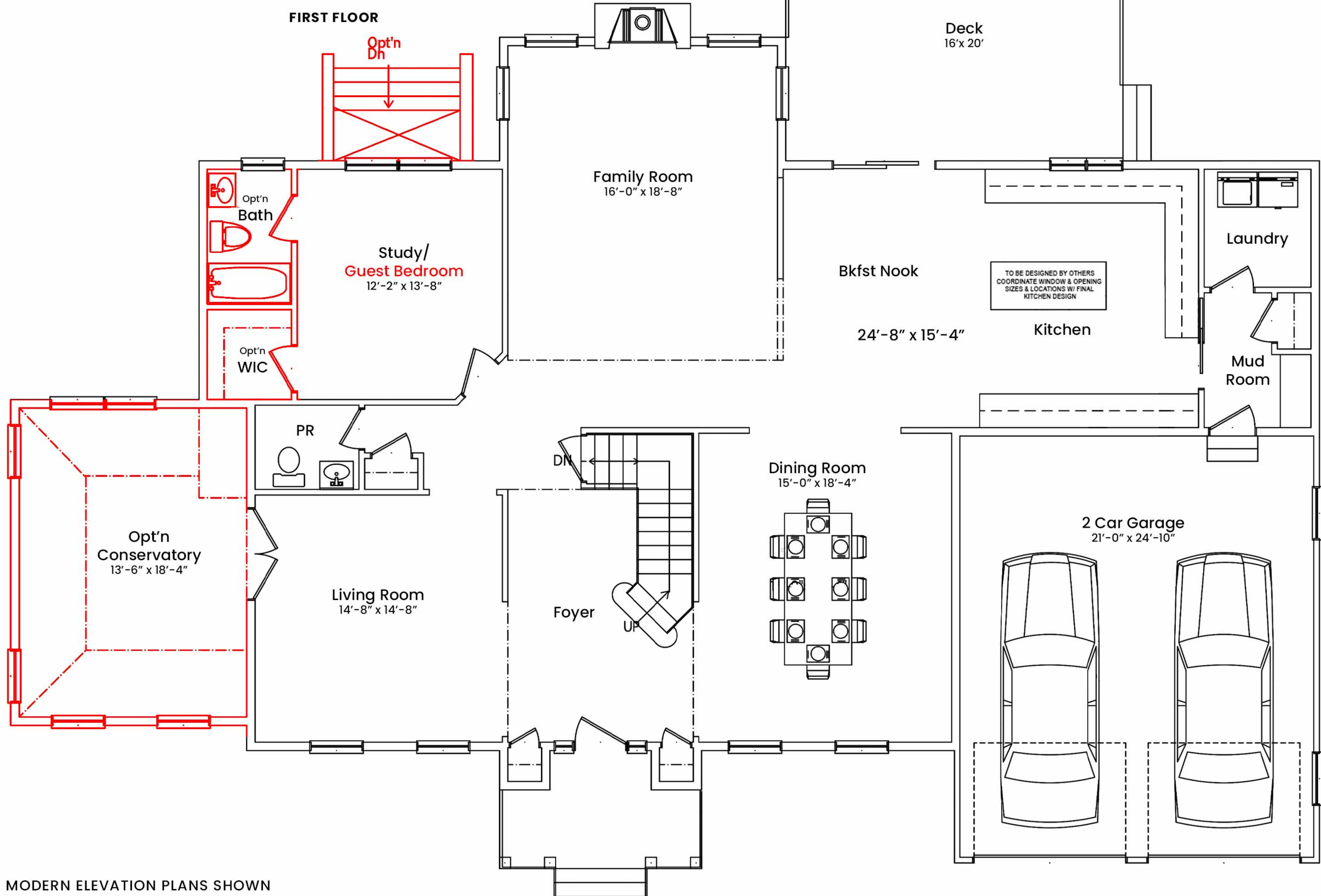


ELEVATION
C

THE SAMUEL

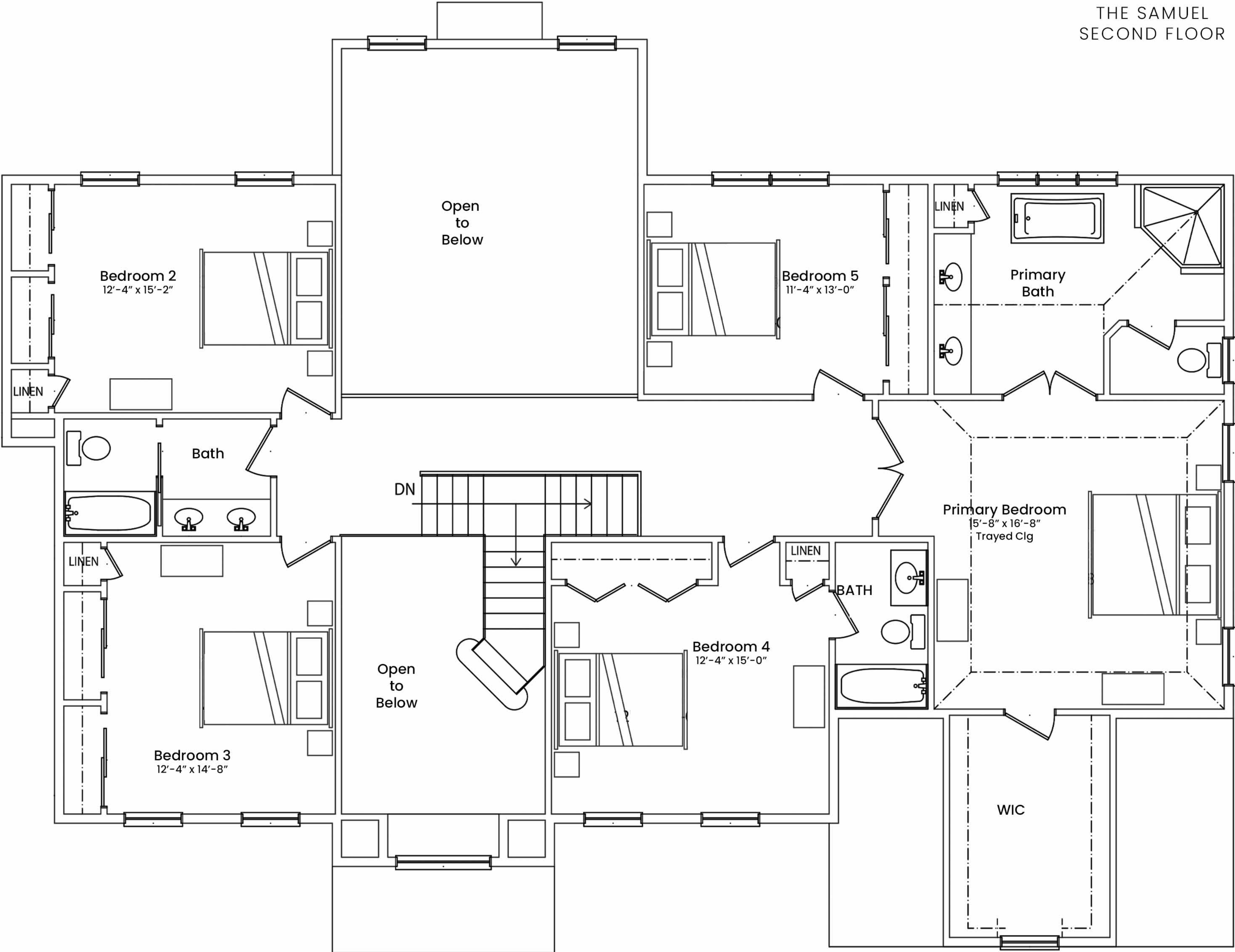
5 bedroom | 3.5 bathroom | 3,854 sqft | 2 car garage

EXPANDABLE TO 4,000 SQFT | 6 BED | 4.5 BATH



MODERN ELEVATION PLANS SHOWN

THE SAMUEL
SECOND FLOOR



THE AVALON

5 bedroom | 4.5 bathroom | 4,188 sqft | 2 car garage

EXPANDABLE TO 4,673 SQFT | 6 BED | 5.5 BATH



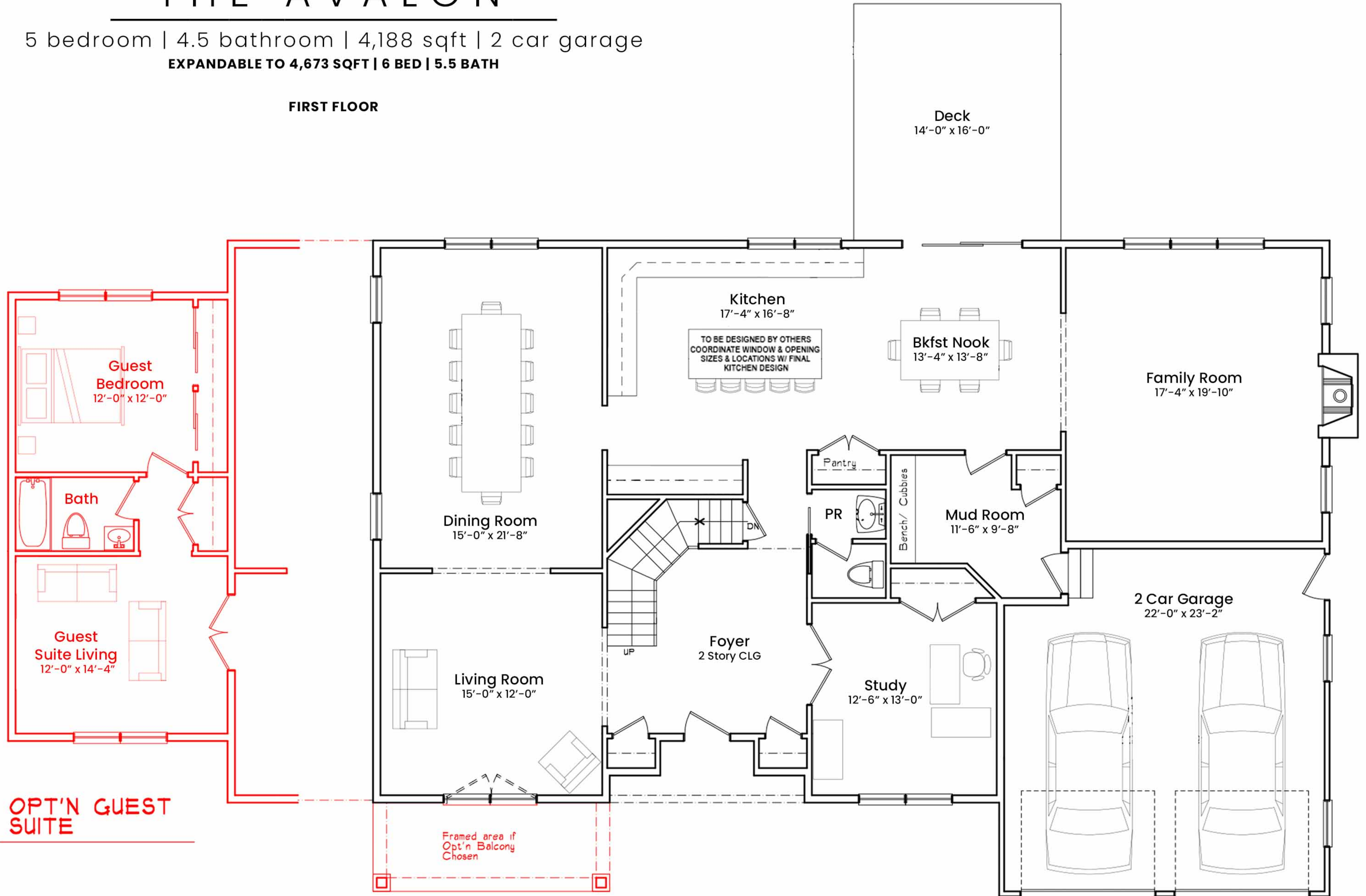


THE AVALON

5 bedroom | 4.5 bathroom | 4,188 sqft | 2 car garage

EXPANDABLE TO 4,673 SQFT | 6 BED | 5.5 BATH

FIRST FLOOR



THE AVALON
SECOND FLOOR



THE ASPEN

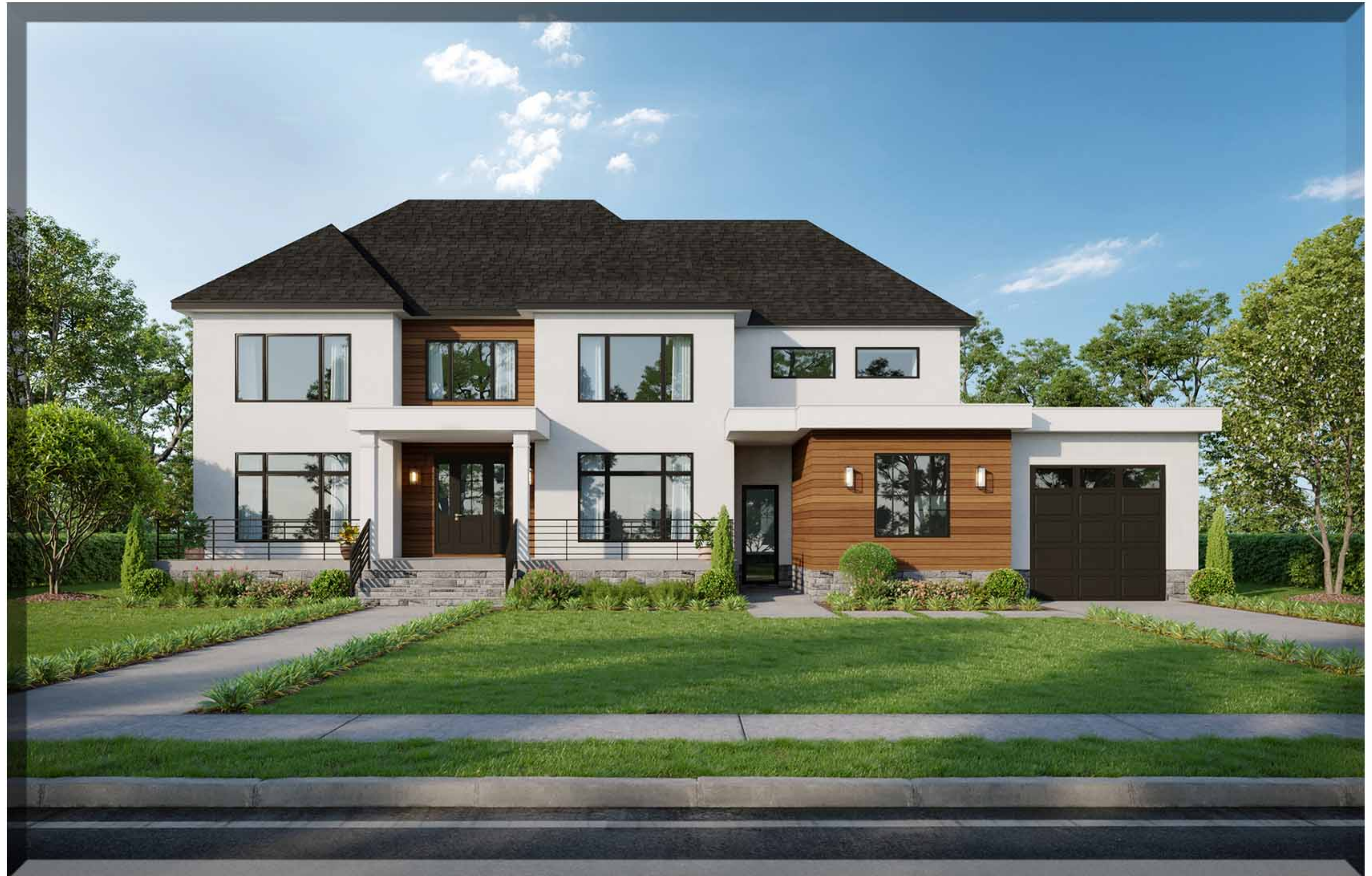
5 bedroom | 4.5 bathroom | 4,650 sqft | 1 car garage
EXPANDABLE TO 6 BED OR 2 CAR GARAGE | 5.5 BATH



**ELEVATION
A**



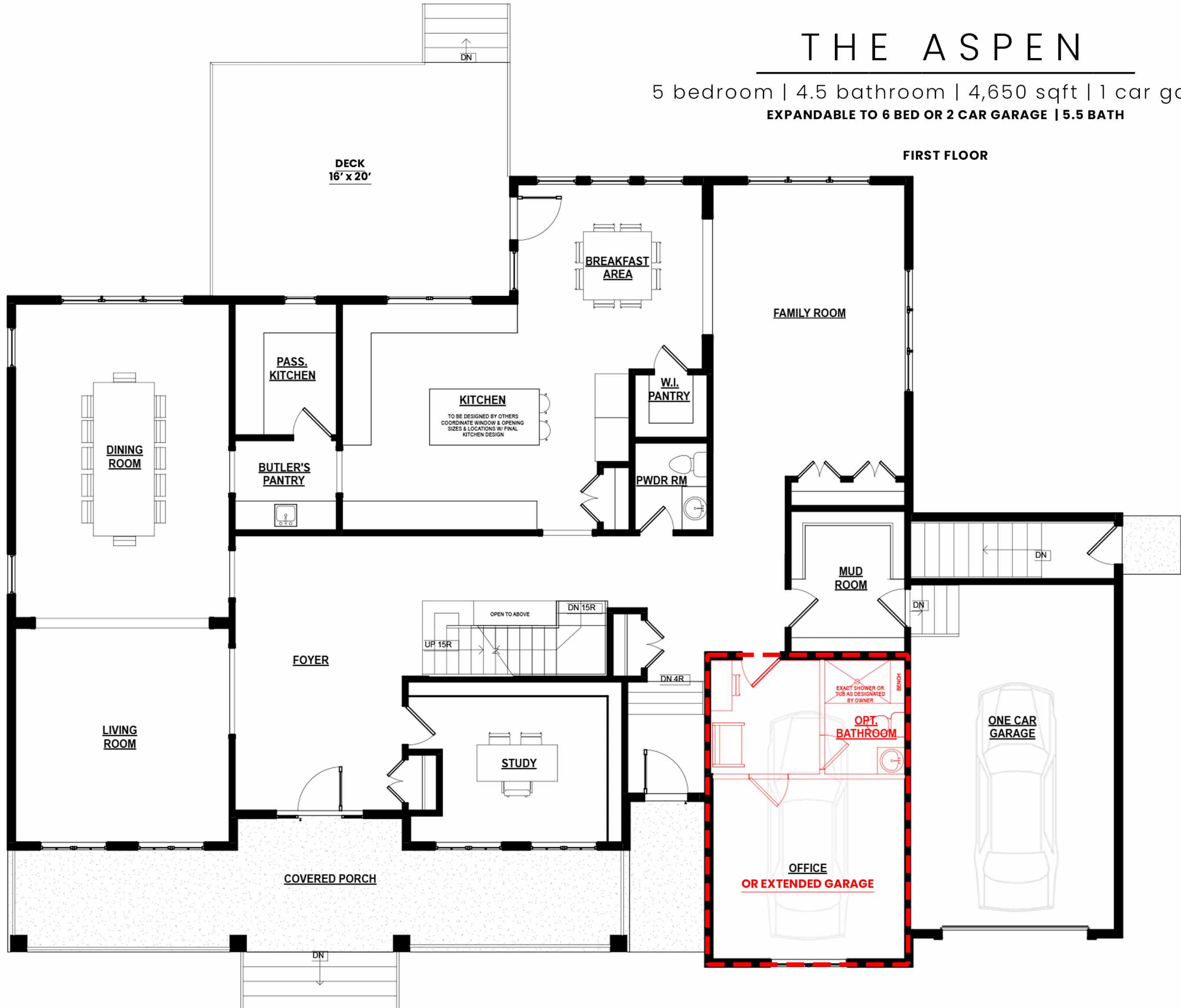
**ELEVATION
B**



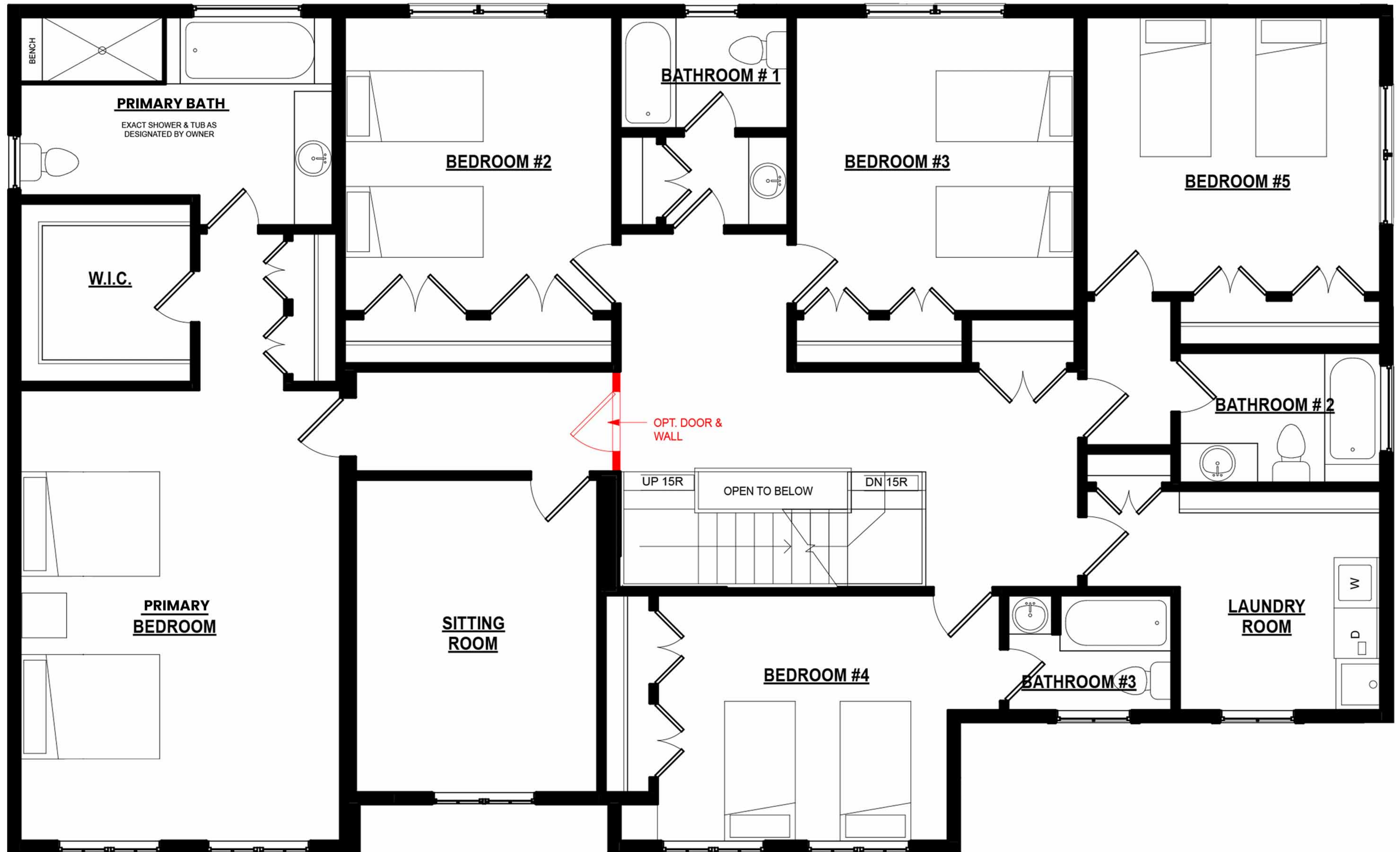
THE ASPEN

5 bedroom | 4.5 bathroom | 4,650 sqft | 1 car garage
EXPANDABLE TO 6 BED OR 2 CAR GARAGE | 5.5 BATH

FIRST FLOOR



THE ASPEN
SECOND FLOOR



THE HENRY

6 bedroom | 6.5 bathroom | 5,000 sqft | 3 car garage





**ELEVATION A
STUCO & STONE**



**ELEVATION B
VERTICAL SIDING & STONE**

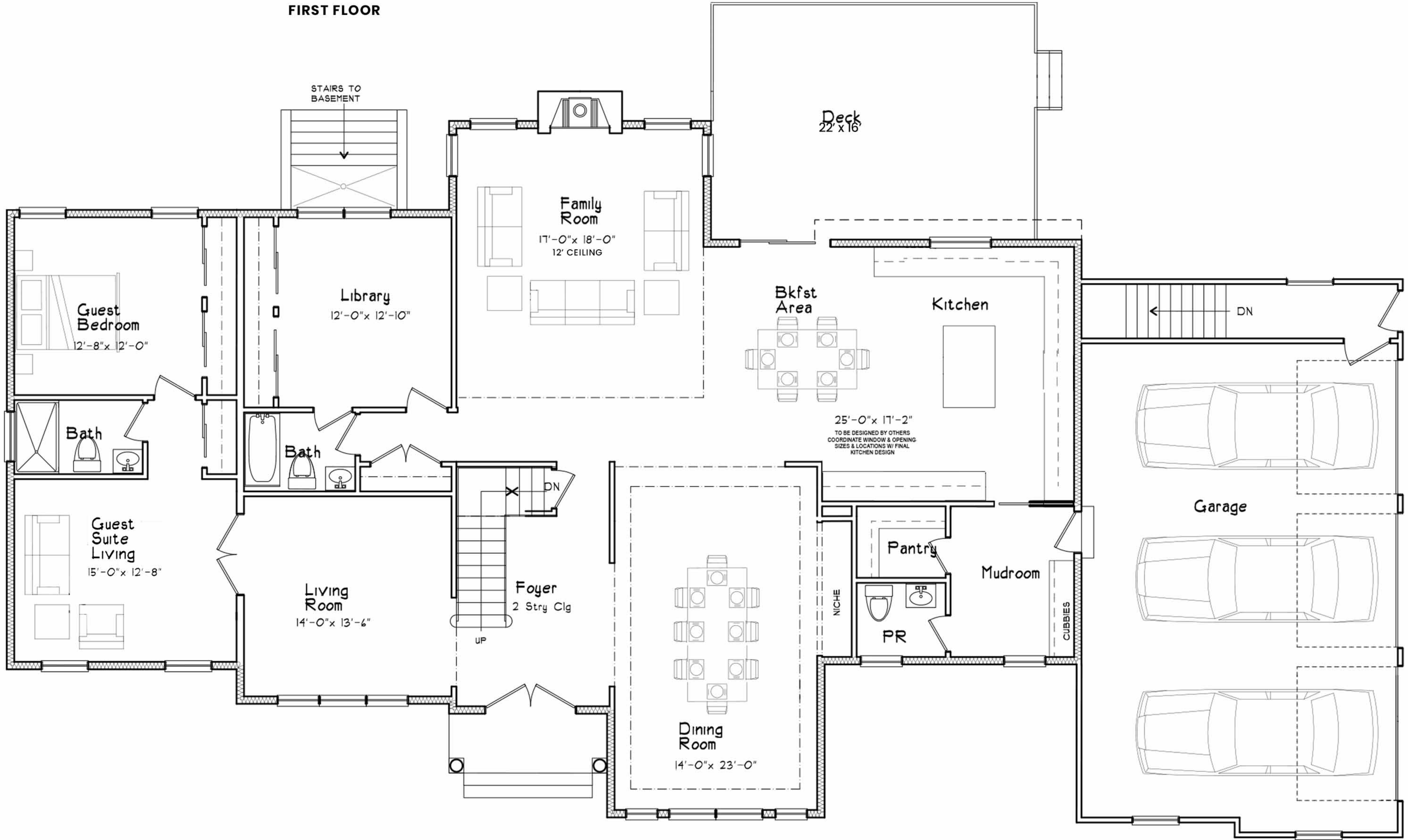


**ELEVATION C
STUCO**

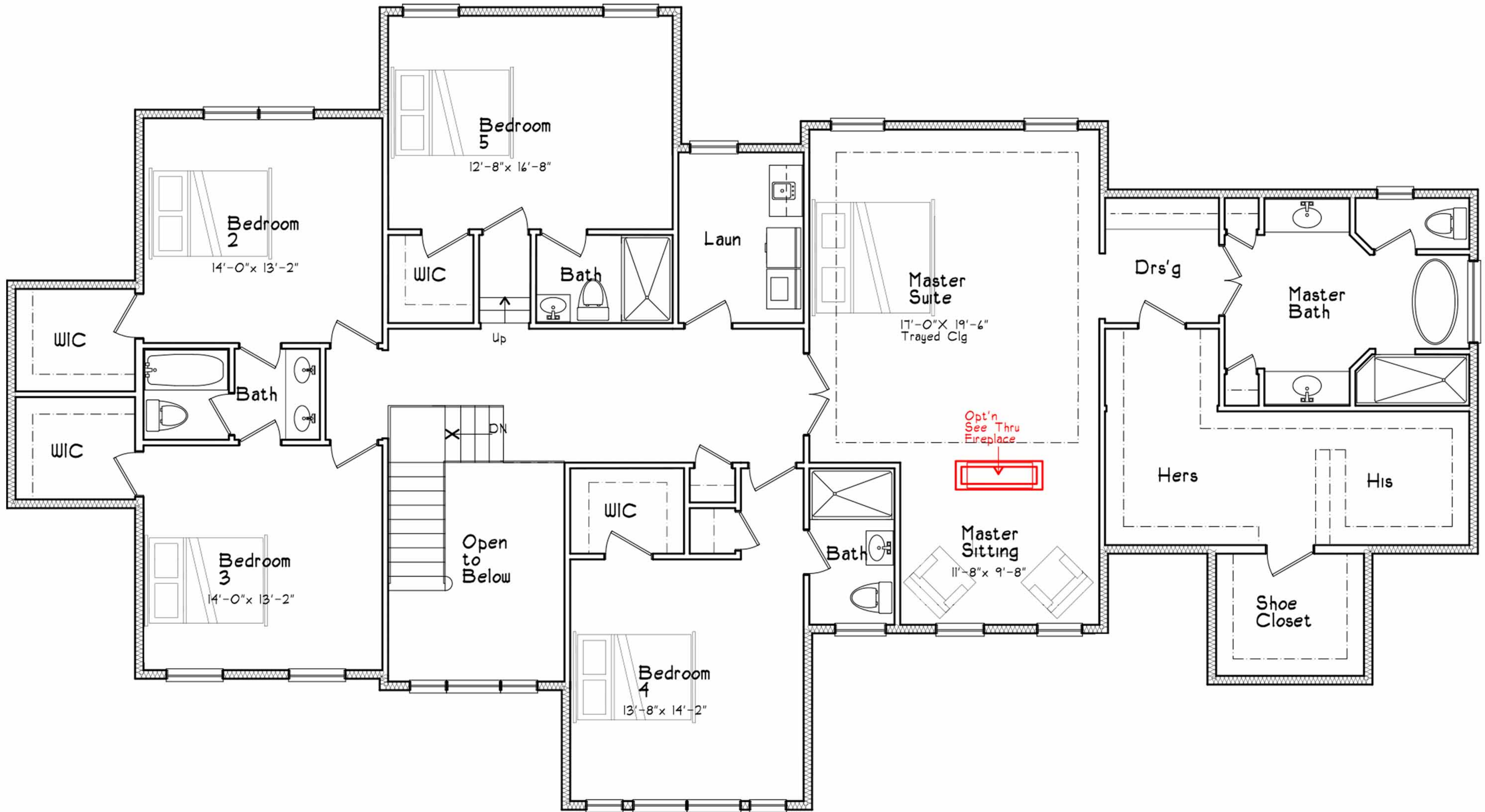
THE HENRY

6 bedroom | 6.5 bathroom | 5,000 sqft | 3 car garage

FIRST FLOOR



THE HENRY
SECOND FLOOR



LUXURY FEATURES

Community Design

- Howell Twp. Premier New Home Community
- 8 Single Family Estate Homes on private Cul-de-sac
- Featuring 4 -6 Bedrooms | 2.5- 5.5 Bath | 2-3 car garage
- Property Surrounded by over 50 Green Acres
- Premium lot options
- Top rated school System
- Expansive 1 +/- acre home sites with Public Water and Septic System, all underground Utilities
- Walk - Out Basement conditions on select home sites possible
- Graded and seeded front, side, and rear yards of disturbed areas
- Belgian Block curbed, Tree Lined Streets, and Street Lamps complement the traditional neighborhood feel
- Landscaping Package: professionally designed, tall evergreens, short ornamentals, shade trees, & mulch

Exterior Details

- Front Elevation - Stone and Vinyl Siding or Hardie Planks as an option
- Black Gutters and Fascia Option Included
- Landscaping Package: professionally designed, tall evergreens, short ornamentals, shade trees, & mulch
- Colorful Hardie Planks w/Azek vinyl trim optional
- Natural shadow lifetime dimensional roof shingles
- Seamless aluminum gutters and downspouts
- Insulated raised panel entry door and door chime
- Front entry with limestone edging on step treads and porch
- Elite series mailbox with address number
- Paved asphalt driveway or pavers blocks as an option

Interior Style

- 9' ceilings on first floor
- 9' ceilings on second floor
- Princess Suite on select models as an option
- Natural gas fireplace with wood and slate surround
- Plush wall -to-wall carpeting
- Oak stair treads with solid oak railing and iron wrought balusters
- Hardwood flooring Package: Foyer, Living Room, Dining Room & Hallways
- Dining Room Trim Package: Coffe ceilings & crown molding, chair rail, shadow box trim, & ceiling Crown Moldings
- Additional Room Trip Package - As an option

Chef Inspired Kitchen

- Granite or Quartz kitchen countertops
- 42" cabinets with full - overlay doors, soft-close drawers, and roll out trays in selected locations
- Cabinet Designer Package: cabinet dentil crown molding, light rail, and glass doors on select cabinets and as an option
- Designer cabinet hardware
- Center Island with built in lower cabinets
- Built in pantry closet with ventilated shelving
- Stainless steel under mount single/double bowl sink with single handle Kohler© faucet and spray
- Butlers pantry on select Models
- Kosher Kitchen Layout included as option
- Elite Lighting Package: four recessed lights and two pendant lights
- Gourmet Appliance Package: GE Cafe® Electric Double Wall Oven, Dishwasher, Gas Burner Cooktop & microwave & hood fan exhaust to outside

The Primary Retreat

- Double entry doors on select
- Sitting Area with wall column dividers on select models (option)
- Oversized dual walk-in closets with ventilated shelving
- Optional natural gas fireplace on select models
- Coffered ceiling & crown molding on selected models or as an option

The Primary Bathroom

- Make Up Vanity on select models or as an option
- Porcelain tile flooring
- Comfort Height Vanities with Granite tops and integral molded sinks Kohler® or Moen faucets
- Shower stall with ceramic tile walls
- Soaking tub - free standing or by buyer selection
- Elegant picture window above soaking tub on select models

Luxurious Bathrooms

- Furniture grade cabinets
- Comfort Height Vanities with Cultured Marble tops and integral molded sinks
- 12" ceramic tile flooring
- To-the-Ceiling bath-tub ceramic tile walls
- Designer lighting
- Kohler® faucets
- Powder Room with furniture grade vanity cabinet
- 'Jack & Jill' bathrooms on selected models

"Going Green" Technology

- Energy Star® rated 2-Zone HVAC natural gas heating and central air conditioning
- Energy Saving high-efficiency 50-gallon natural gas water heater
- Energy Star® rated kitchen appliances
- Energy saving exterior wall outlet insulation
- Energy Star® rated in selected areas
- Energy saving programmable thermostat
- Energy saving R-19 and R-38 ceiling insulation
- Energy saving argon filled low E thermal emissive windows

Construction

- 2-3 car side entry garage with insulated walls and insulated overhead doors
- Poured concrete basement foundation with 9' ceiling height
- Second floor HVAC unit located in the attic with pull down -stairs
- 200-amp electrical service
- Three telephone jacks and two internet/cable outlets
- Exterior weather resistant GFCI electrical outlets in front and back
- Pre-construction orientation
- Pre-sheetrock orientation
- Pre-Settlement Walk-Thru Orientation/Final Inspection
- Complete 11 Month post settlement inspection
- 10-Years Warranty

Note: *All information is subject to errors, omissions, and any changes without notice. The Builder reserves the right to make substitutions or similar quality.



Founded in 2001, the family owned and operated, SEMA LLC has had the joy in creating a product that emphasizes quality and attention to detail. SEMA has become a leader in New Jersey for developing luxury custom homes. SEMA has a reputation for displaying transparency with customers throughout the entirety of the process and strive to individualize the home buying experience.

OUR PROJECTS



CEDAR VILLAGE



PITNEY FARM ESTATES



MARTINSVILLE

SUNNYMEADE ESTATES



SCOTCH PLAINS



SOUTH PLAINFIELD



DESIRABLE LOCATION

Where you and your family are minutes away from shopping, State parks, recreation, and the beautiful beaches of The Jersey Shore.

HAYSTACK GLEN TO:

BROOKLYN, NY	85 Minutes	ISLAND BEACH STATE PARK	40 Minutes
ATLANTIC CITY, NJ	75 Minutes	OCEAN COUNTY COLLEGE	30 Minutes
SEASIDE HEIGHTS, NJ	35 Minutes	METEDECONK NATIONAL GOLF	20 Minutes
TOMS RIVER, NJ	25 Minutes	IPLAY AMERICA	20 Minutes
LAKEWOOD, NJ	15 Minutes	MANASQUAN RESERVOIR	5 Minutes
JACKSON, NJ	15 Minutes	SIX FLAGS GREAT ADVENTURE	25 Minutes
DEAL, NJ	25 Minutes	NEWARK AIRPORT	50 Minutes

WWW.THENUSSBAUMTEAM.COM



*All information is subject to errors, omissions, and change without notice. Builder reserves the right to alter plans and specifications without prior notice. Illustrations are conceptual, and all dimensions are approximate. Options and upgrades are available at an additional cost. Elevations and interior photos are artist's renderings and show optional selections and features. For more information, please contact a sales agent. We are committed to compliance with all federal, state, and local fair housing laws. All prices, features, and options are subject to change 3/6/2024.